



THE WAVE OF THE FUTURE.

Tsunami BY FOREST RIVER



POWERFUL.



DYNAMIC.



SWEEPING.



GRACEFUL.



EXHILARATING.

Rising up on the horizon, casting a long shadow over all other vehicles in its path, the Tsunami luxury motorhome from Forest River is a revolutionary fusion of form and function.

4104QS



DRIVE IN COMFORT.

Tsunami's space-age ergonomically designed cockpit puts everything within arm's reach. A tilt/telescopic "Smart Wheel," upgrade stereo CD changer and motorized flip-up rear view monitor that hides away when not in use are just some of the convenient features.



32" PLASMA TV.

Easily seen from anywhere in the living quarters, this optional high-definition beauty brings every movie to life.



SEPERATE BUT EQUAL.

Both pilot and co-pilot enjoy the ability to control their own "space" with deluxe dual zone automotive heat and A/C controls.

Luxury comes with expectations.

Tsunami exceeds them all. From the moment you step into the all-new Tsunami by Forest River, you are attracted to the rich elegance found throughout the entire coach.



Model 4104 QS with Wave Pearl Deluxe Paint.

UNIQUE STYLE.

This residential style cast iron vessel sink highlights a spacious bathroom arrangement with over-size shower and separate commode room.



4104QS



AN INVITING RETREAT. (LEFT)
Tsunami's double slide-out bedroom design offers a king bed option rarely seen in a coach of this size.

TAKE IT WITH YOU. (BELOW)
With vanities on both sides of the bedroom, shirt closets, wardrobes and enormous drawer storage, the Tsunami was designed with your comfort and convenience in mind.

Setting New Standards in Affordable Luxury.

Combining incredible style with expansive living space, the galley of the Tsunami offers more than enough room to prepare even the most elaborate meals. The optional stainless steel Advantium™ oven and dishwasher help transform this coach into a true home away from home.



Model 4104 QS quadslide with Wave Pearl Deluxe Paint.



3704WS



PLUM DECOR



RELAX.

Dual slide-outs in this bedroom host an abundance of storage and combine with exquisite lighting to form a great place to retire for the evening.



FLIP-DOWN TV.

This convenient flip-down television provides extra head room and convenience.

Exceptional Finish and Attention to Detail.

This spacious Tsunami model (3704WS) features our stately Frosted Maple cabinetry, one of five custom crafted hardwood interiors to choose from – each offering Corian™ countertops, elegant lighting and upgrade flooring. The designer hutch with pull-out pantry offers additional counter and storage space.



Model 3704WS with standard painted graphics (plum)

ROOMY.

This optional four-door Norcold™ refrigerator with ice maker offers all the comforts of home so you'll never lack for food storage space.



3704WS



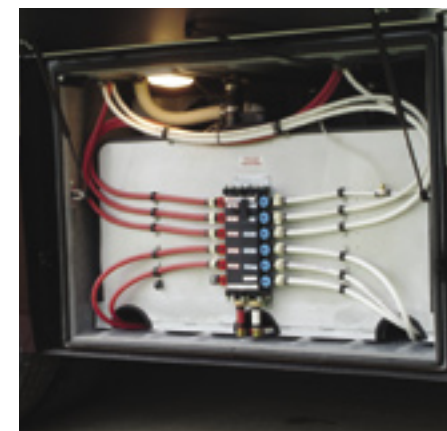
CONVENIENT.

Tsunami's engineers carefully designed this easy-to-get-to electrical compartment, complete with wiring diagram.



ACCESSIBLE.

Every area of the Tsunami has been well thought-out and organized for your convenience. The dump station offers electronic controls and water pump switch.



INNOVATIVE.

The Tsunami's ManaBloc™ central water distribution system eliminates elbows throughout the water system and provides a direct line to fixtures with individual shut-off control.



PURE.

Tsunami's Three-Stage Water Purification System offers dual hi-flow water pumps to help maintain water pressure during multiple uses.

Designed with Your Comfort in Mind.

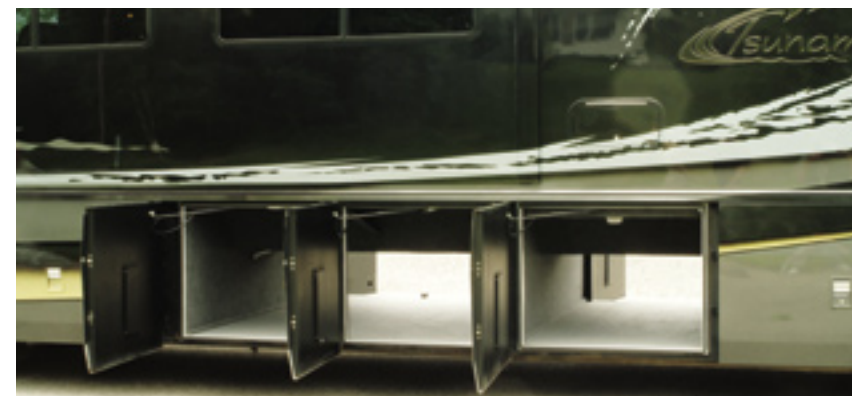
When we decided to build the best motorhome in the business, we did a lot of research, asking experienced RVers what they were looking for in an affordable luxury coach. Our uniquely designed lounge dinette features stylish Comfort by Design™ seating and offers a relaxing spot to enjoy meals, play games or just visit with friends.



Model 3704 WS with Wave Pearl Deluxe Paint.

CAVERNOUS.

Tsunami's side opening exterior storage doors allow for greater accessibility and easy access to insulated, steel-cage protected cargo areas. Our above-floor slide-out systems allow for increased storage space below.



BENEATH THE BEAUTY LIES THE BEAST.

It is both quality of construction materials and innovative engineering techniques that have set the Tsunami apart from the competition. Tsunami’s extraordinary amount of strong, tubular steel is integrated with the chassis to form the basis of our uni-body, “steel cage” construction. With this ultra-strength steel skeleton as a foundation, Tsunami’s engineers have utilized superior vacuum-bond lamination processes that make our floor, sidewall and roof systems the strongest, most durable in the industry. By taking the time to integrate each structural component with both the chassis and each other, we are drastically improving the Tsunami’s ability to take the wear and tear of road travel. This means that each Tsunami is built to stand the test of time – from the inside out!

VACUUM-BOND LAMINATED ROOF SYSTEM

- 1. One-Piece Molded Fiberglass Crowned Roof (Seamless)
- 2. Lauan Plywood
- 3. Structurally Engineered Block Foam Insulation
- 4. Lauan Plywood
- 5. Tubular Aluminum Framing with Block Foam Insulation
- 6. Lauan Plywood
- 7. Foam Padding
- 8. Vinyl Interior Headliner for Easy Maintenance

VACUUM-BOND LAMINATED FLOOR SYSTEM

- 9. Sturdy Plywood Flooring
- 10. 2-1/2” Thick Block Foam Insulation
- 11. 2-1/2” Tubular Steel Floor Framing
- 12. Lauan Plywood
- 13. Fiberglass Underbelly

LAMINATED STORAGE COMPARTMENT FLOOR

- 14. Galvanized Steel Underbelly
- 15. Oriented Strandboard Decking
- 16. Thermo Plastic Compartment Liner
- 17. Tubular Steel Framing

VACUUM-BOND LAMINATED SIDEWALLS

- 18. Gelcoat Fiberglass Exterior
- 19. Lauan Plywood
- 20. Thick Block Foam Insulation
- 21. Tubular Aluminum Framing
- 22. Lauan Plywood
- 23. Decorative Interior Panels

ADDITIONAL FEATURES

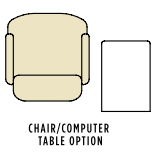
- 24. Residential Carpeting
- 25. Thick Foam Padding
- 26. Bus-Style, Side-to-Side Opening Storage Compartment Doors
- 27. Sleek Automotive Styling with Automotive Headlamps
- 28. 8.0K Diesel Generator on Automated Slide-Tray
- 29. Dual-Climate Automotive Environmental Controls
- 30. Panoramic Windshield
- 31. Space-age Cockpit Design



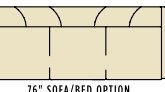
SPACIOUS LIVABILITY.

Each and every Tsunami floorplan has been designed with your comfort in mind. We have taken the time to listen to the ideas and requests of our customers and dealers, integrating them into our coaches. Choose from a number of spacious floorplans, each with an abundance of interior and exterior storage.

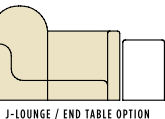
AVAILABLE OPTIONS.



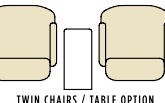
Available on models:
3508KS 3704WS
3508LS 3904KS
3508QS 3904LS
3508SS 3904QS
3508WS 3904SS
3704KS 3904WS
3704LS 4104QS
3704QS 4104WS
3704SS



Available on models:
4104WS 4104QS

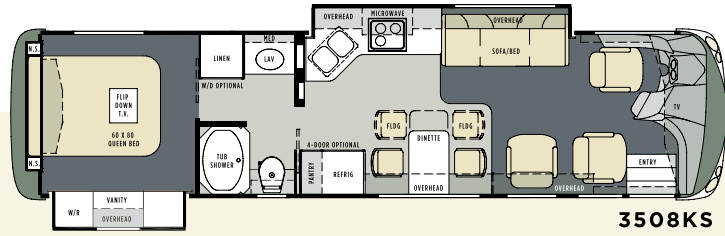


Available on models:
4104WS

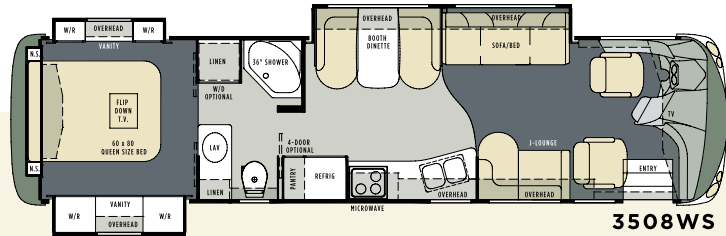


Available on models:
4104WS

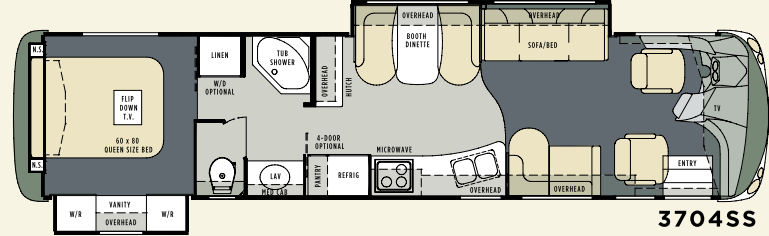
- CARPET
- TILE
- FURNITURE



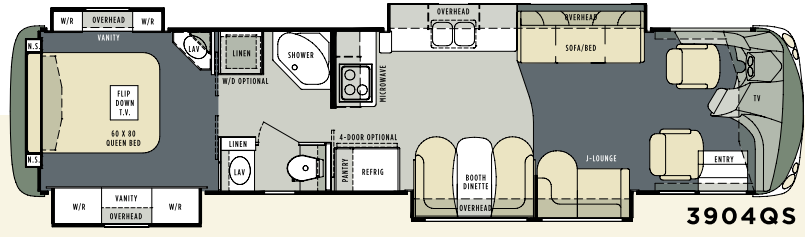
3508KS



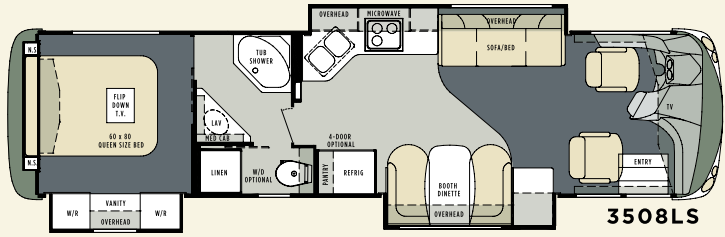
3508WS



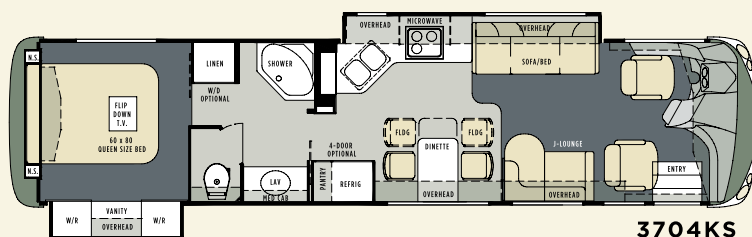
3704SS



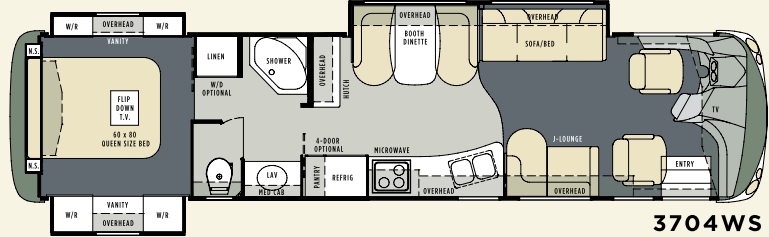
3904QS



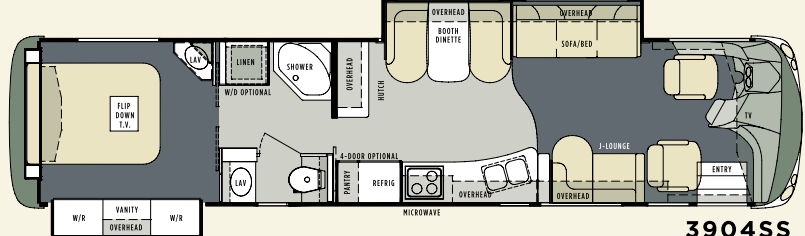
3508LS



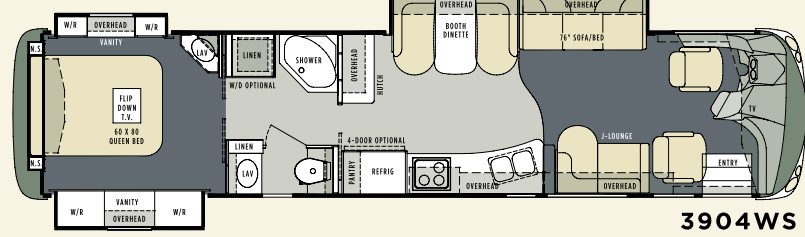
3704KS



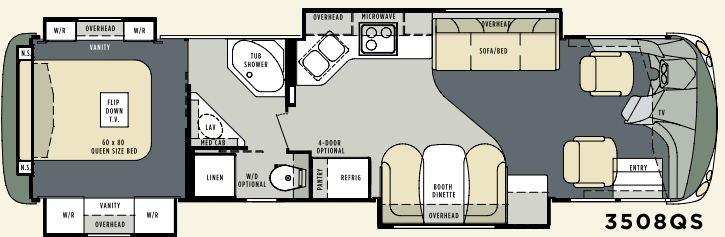
3704WS



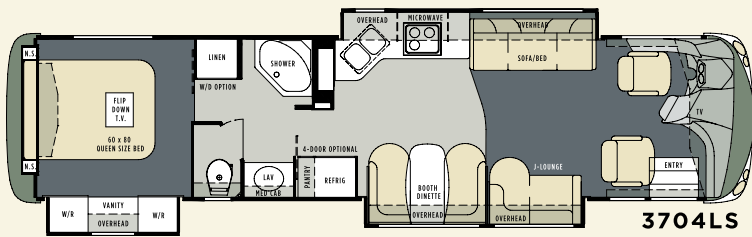
3904SS



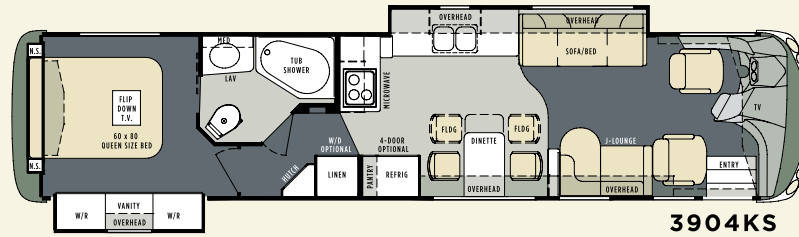
3904WS



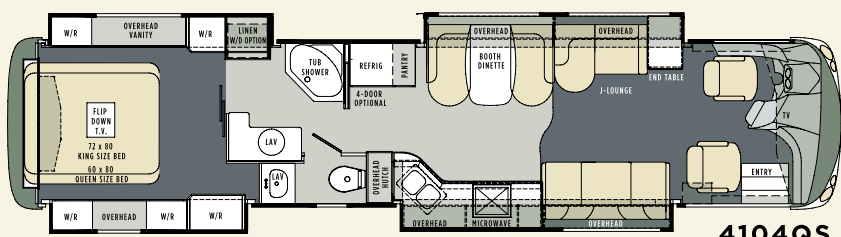
3508QS



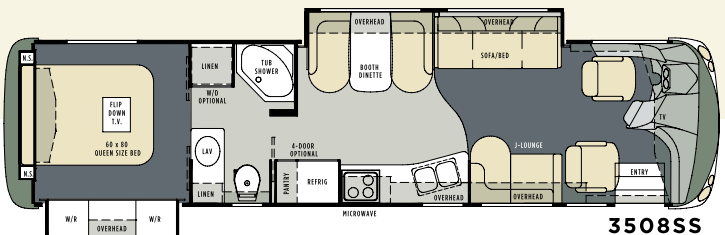
3704LS



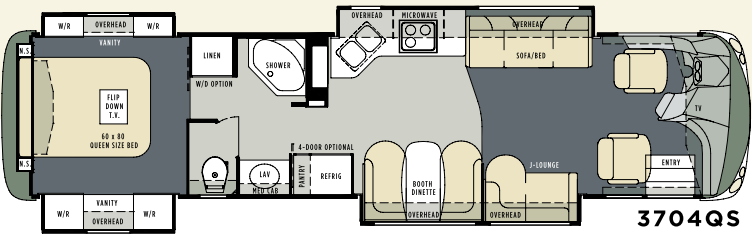
3904KS



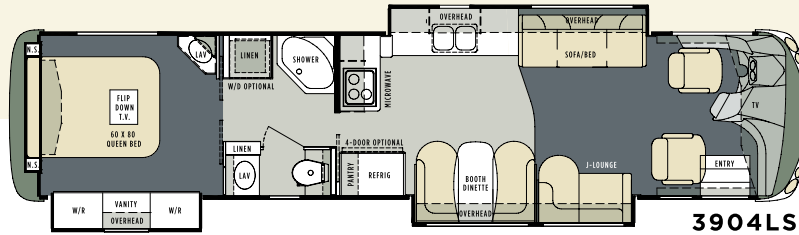
4104QS



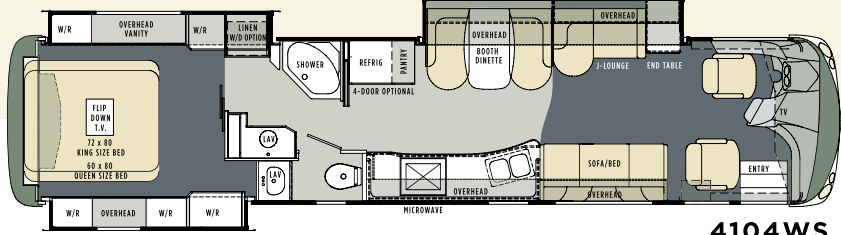
3508SS



3704QS



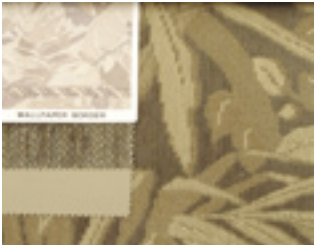
3904LS



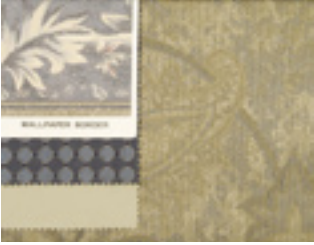
4104WS

RICH DESIGNER INTERIORS.

Tsunami interiors are not only well designed in terms of spaciousness and livability, but they exude richness and taste as well. Choose from our quality selection of custom designed interior decors, featuring coordinated accents, window treatments and pillows – each with a distinctive style and flair.



CHAMPAGNE



OCEAN MIST



GARNET



PLUM



SAGE



HAND-CRAFTED HARDWOOD CABINETRY.

Choose from five solid hardwood interior cabinetry options, including Walnut, Light Oak, Natural Maple, Frosted Maple and Natural Cherry.



STANDARDS AND OPTIONS.

STRUCTURAL

2-½" Laminated Steel Framed Floor w/ Expanded Bead Foam Insulation (3" Overall Thickness)	S
6" Twin I-Beam Supplemental Chassis Superstructure	S
½" Plywood Floor Decking	S
Electric Slide-Out Rooms	S
Integrated Front and Rear Fiberglas Bumpers	S
Laminated, Aluminum Framed Exterior Sidewalls and Roof (including all openings)	S
Open Bay Storage	O
Chassis – Freightliner XC Raised Rail	S
10,000 lb. Hitch Receiver w/ Six-Point Connector	S
Air Cleaner Restriction Indicator	S
Alternator – Leese/Neville 200 Amp, 12 Volt, 31-SI	S
Aluminum Wheels (4) w/ Polished Hub Covers	S
Battery – Dual 12V, 1900 CCA – (Two 950 CCA)	S
Brakes Full – Air w/ Automatic Slack Adjusters and Schrader Valve and ABS	S
Chassis – Raised Main Rail, ¼" x 2-¾" x 9" Steel	S
Chrome Exhaust Extension	S
Cruise Control – Electronic on Smart Wheel	S
Engine Block Heater – 1000 Watt/110V	S
Engine Torque – 1200 lbs-ft @ 1300 RPM	S
Engine – ISL – 400 HP @ 1900 RPM w/ C-Brake 8.9 L Electronic Diesel	S
Fuel Capacity – 150 GAL	S
Fuel / Water Separator	S
GAWRF – Gross Axle Weight Rating Front	14000
GAWRR – Gross Axle Weight Rating Rear	20000
GCWR – Gross Combined Weight Rating	44000
GVWR – Gross Vehicle Weight Rating	34000
Midland Pure Air Plus Heated Air Dryer	S
Compression Brake	S
Power Steering	S
Radiator, Side Mounted	S
Rim Size – Inside Duals – Accuride 22.5 X 8.25 Steel, Black	S
Suspension, Rear – Air Bags	S
Suspension, Independent Front Suspension – Air Bags	S
Tire Load Range: H	S
Tires – Michelin XZA1 295/80R 22.5 LRH Radial	S
Transmission – Allison 3000MH, 6 Speed, Push Button Electronic Shifter	S
Transmission Oil Temperature Gauge	S
Warranty – 3YR/50,000 Mile – Freightliner (See Freightliner Warranty for details.)	S

EXTERIOR

Automotive Undercoating	S
Cable TV/Phone Jacks	S
Chest Refrigerator/Freezer on Slide-Out in Basement, 100#,12v/110v	O
Chrome Mirrors	O
Coach Batteries – Four 6V	S
Crowned, One-Piece Fiberglass Roof	S
Dual Fuel Fill Doors	S
Dual Lense Driving/Fog Lights	S
Entrance Door Awning – Automatic Operation w/ Remote	S
Entrance Steps, Double – Electric	S
Front and Rear Molded Fiberglas Caps	S
Front Entrance Door w/ Screen and Deadbolt	S
Full Exterior Paint and Graphics – Standard Wave	S
Full Exterior Paint and Graphics – WavePearl	O
Full Exterior Paint and Graphics – Wave Pearl Deluxe	O
Full Length Mud Flap – Rear	S
Glove Box in Utility Bay	S
Individually Switched Electric Gate Valves w/ Manual Override	S
Power Entry Door System w/ Power Actuated Compartment Door Locks	S
Lockable, Lighted Basement Storage	S
Outside Shower in Utility Bay w/ Water Pump Switch	S
Painted Aluminum Baggage Doors w/ Gas Struts	S
Pantographic High Mount Intermittent Windshield Wiper System	S
Patio Awning – Automatic Operation w/ Wind Sensor and Remote	S
Patio Light, Amber	S
Rear Ladder	S
Remote Heated Rear View Mirrors w/ Turn Indicators	S
Slide-Out Room Covers	S
Slide-Out Storage Trays in Basement	O
Thermopane Windows w/ Dark Limo Glass and Screens	S
TV Antenna w/ Booster – Auto Lift	S
Window Awnings	O



STANDARDS AND OPTIONS.

DRIVER/PASSENGER AREA

12V and 110V Outlets for Laptop Computer/Accessories	S
6-way Power Driver Seat Pedestal	S
Air Actuated Step Cover	S
Air Horns, Dual Trumpet	S
Automotive Dash Heater/Air Conditioner w/ Deluxe Dual Zone Controls	S
Auxiliary Start Switch	S
CB Prep w/ Antenna	S
Cobra Compact/Remote Hand Held CB Radio	O
Color Coordinated Carpeted Floor Mat	S
Co-pilot Reclining, Buddy Seat w/ Power Foot Rest	S
Driver Side Sun Screen Roller Shade – Manual	S
Driver/Passenger Map Lights	S
Driver/Passenger Map Pockets	S
DSS in Motion Auto Tracking Satellite System w/ Direct TV Tuner	O
DSS Auto Tracking Satellite System Pre-Wire Only	S
Entrance Step Assist Bar (2)	S
Front Wraparound Curtain w/ Easy Slide Track	S
GPS Navigational System	O
Air Leveling System	S
Hydraulic Leveling Jacks, Automatic	O
I.C.C. Flash on Smart Wheel	S
Intermittent Windshield Wipers w/ Smart Wheel Control	S
Leather-Faced Pilot and Co-Pilot Seats	S
Sony 24" Vega TV	S
Sony 32" Plasma TV	O
Pioneer 12 Disk CD Changer	S
Pioneer AM/FM Dash Radio w/ Motorized LCD Rear Observation Monitor	S
Sony HiFi Stereo VCR / DVD Player	S
Rear Vision Color Camera	S
Smart Source Electronic Video Switch Box w/ IR “Eye” in Bedroom, Cockpit and Patio	S
DHS Surround Sound System	S
Supplemental 2-Speed Built-in Overhead Defroster fan	S
Tilt and Telescopic VIP 18-inch Leather Wrapped, “Smart” Steering Wheel	S
Trip Tek 2500 Message Center	O
Driver / Passenger Power Sun Shades	S

LIVING/DINING/GALLEY

2-Burner Cooktop – Recessed w/ Pots/Pans Storage	S
2-Burner Range Cover, Lightweight ¼" Corian Solid Surface Material	S
Amana 110v Residential Refrigerator	O
Double Door Refrigerator/Freezer 2-Way w/ Icemaker, 10 cu ft	S
Side-by-Side Refrigerator/Freezer w/ Icemaker, 12 cu ft (four door)	O
Central Vacuum System	O

Choice of 5 decors – Champagne, Sage, Plum, Ocean Mist, Garnet	S
Day/Night Shades in Living/Dining Area	S
Dinette – Free-Standing, 2 Chairs and 2 Folding Chairs: Per Spec	S
Dishwasher, Stainless Steel, Built-in, Five Place Setting Capacity (deletes pots/pans storage)	O
Leather J-Lounge	S
Leather Swivel Recliner Lounge Chair w/ Computer Table	O
Fabric Easy-Bed Sofa w/ Drawer and Décor Pillows	S
Formica Alaskan Slate HPL Flooring at Kitchen, Dining and Foyer	S
Hard Wood Raised Panel Refrigerator Inserts	O
Booth Dinette, Leather, w/ Storage and Solid Surface Table: Per Spec	S
Master Control Panel w/ Systems Monitor	S
Microwave – 30 Advantium Stainless Steel Convection w/ Range Hood	O
Microwave – 30 Stainless Steel Convection w/ Range Hood	S
Mini Blinds in Kitchen	S
Nylon Carpeting w/ Rebond Pad in Bedroom and Living Area	S
Overhead Cabinets in Slide-Outs	S
Pantry – Slide-Outs (delete w/ 4-Door Refrigerator or Amana)	S
Rubber Step Tread	S
Single Lever Kitchen Faucet w/ Pull Out Spray Head, Soap Dispenser	S
Corian Sink Covers, Lightweight ¼" Thick Solid Surface	S
Corian Solid Surface Countertop/Sinks	S
Solid Wood Cabinetry Throughout, Choice of Maple, Natural Maple, Cherry, Walnut, Oak	S
Solid Wood Drawer Sides w/ Lauan Bottom	S
Stainless Steel Refrigerator Inserts	S
Vinyl Padded Ceiling	S
Wall Mirrors Throughout	S

BATH

Formica Alaskan Slate HPL flooring	S
Full Size Dressing Mirror	S
Medicine Cabinet w/ Adjustable Shelves	S
One-Piece Fiberglass Shower or Tub	S
Glass Shower or Tub Enclosure	S
Shower/Tub White Skylight	S
Double Lever Lav Faucet	S
Single Lever Shower Faucet w/ Flex Head and Body Spray	S
Corian Solid Surface Countertop and Cast Iron ‘Vessel’ Bowl	S
Towel Bars on Shower Enclosure	S
VacuFlush Ceramic Marine Toilet w/ Foot Flush	S
Vented Washer/Dryer	O
Washer/Dryer Prep	S

BEDROOM

60" x 80" Queen Bed w/ Bedspread	S
72" x 80" King Bed (where available)	O
Closet Lights	S
Decorative Wall Lights	S
Nightstands w/ Corian Top	S
15" LCD TV w/ Remote – Flip Down	S
Safe	O
TV/VCR/Satellite Tuner Signal From “Smart Source” Switch Box	S

STANDARD SAFETY FEATURES

110v GFI Protected Circuit (Kitchen, Bath, Exterior)	S
Carbon Monoxide Detector	S
Courtesy Lights Throughout	S
Daytime Running Lights	S
Dead Bolt Lock on Entrance Door	S
Emergency Exit Windows in Bedroom and Living Room	S
LP Gas Detector w/ Automatic LP Solenoid Shut Off Valve	S
Projector Beam Cornering Lamps	S
Projector Beam Docking Lights	S
Smoke Alarm	S
Surface Mounted Fire Extinguisher	S
Third Brake LED Safety Light	S

HEATING/VENTILATION/POWER & PLUMBING

MANABLOC Central Water Distribution System	S
10 Gallon Gas/Electric Water Heater w/ DSI and By-Pass	S
120v Energy Management System w/ Automatic Overload Protection	S
2,000 Watt ProSine Inverter w/ 100 Amp Charger and Four 6v Batteries	S
50 Amp 120v Distribution Panel and Cord	S
50 Amp Power Cord on Motorized Reel	S
Aqua-Hot Coach Heat and Hot Water System	O
Arctic Package (Heated Holding/Water Tanks)	S
Automatic Generator Start System	O
Automatic Power Transfer Switch	S
In-Floor Ducted 40,000 BTU Furnace	S
Easy Access Battery Bank	S
Electronic Battery Disconnect, Two Switch Locations	S
Entry Step Courtesy Lights	S
Fantastic Roof Vent (Bath)	S
Fantastic Roof Vent (Kitchen)	S
Onan 8.0 QD Diesel Gen Set on Slide Tray	S
Patio Receptacle, GFI Protected	S

Roof A/C – 13.5 Heat Pump Low Profile Ducted, Bedroom	S
Roof A/C – 15.0 Heat Pump Low Profile Ducted, Living room	S
Solar Panel Battery Trickle Charger, 80 Watt	O
Water Pump Switches Located in Water Tank Compart, Master Control Panel, and Utility Bay	S
Water Purifier, Full Unit, 3 Stage w/ Dual 5.3 GPM Water Pumps	S

DIMENSIONS

Interior Height	78"
Interior Width	95 ½"
Overall Height w/ AC	12'-3"
Overall Height w/ Optional Satellite	12'-4"
Body Width	102"
Overall length – 3508	35' 8"
Overall length – 3704	37' 4"
Overall length – 3904	39' 4"
Overall length – 4104	41' 4"

LIQUID CAPACITIES - GALLONS

Black Water (gal)	42
Fresh Water (gal)	90
Fuel Capacity	150
Grey Water (gal)	60
LP Tank 1 x 50 gal. x 80% Cap	40
LP Tank 2 x 13.2 gal. x 80% Cap w/ Aqua HOT Option	21

All specifications contained herein are based on the latest product information at time of printing. Forest River reserves the right to make changes in colors, materials, equipment and specifications at anytime without notice and assumes no responsibility for any errors in this brochure.



Model 3904 WS with Wave Pearl Deluxe Paint.



Forest River, Inc. 55470 C.R. 1 Elkhart, IN 46515-3030
574.389.4600 www.forestriverinc.com

YOUR TSUNAMI DEALER: